

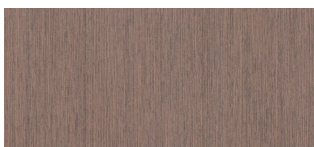
# FINIS DE CABINE

POUR KONE MONOSPACE® 300

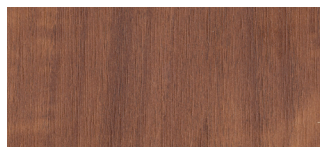
## Stratifié Bois



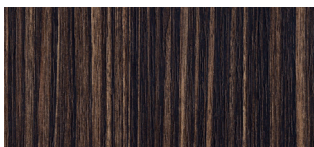
**Kensington Maple**  
(L419; 10776-60\*\*)



**Smoky Walnut Woodline**  
(L410; 6926-NT\*)



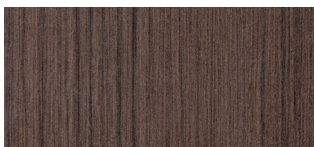
**Macchiato Walnut**  
(L411; 6932-NT\*)



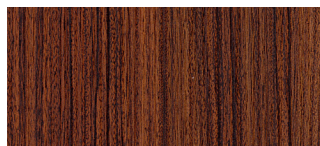
**Ebony**  
(L412; 9012-NT\*)



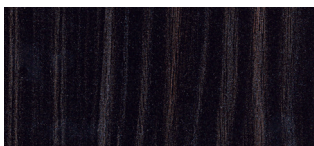
**Asian Sand**  
(L413; 7952K-18\*\*)



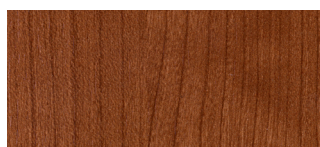
**Studio Teak**  
(L414; 7960K-18\*\*)



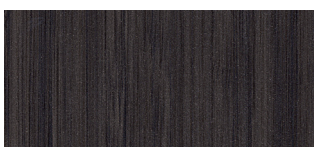
**Rio**  
(L415; 7947K-18\*\*)



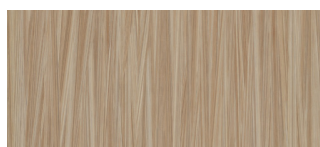
**Madagascar**  
(L416; 7944K-01\*\*)



**Amber Cherry**  
(L417; 7919-38\*\*)



**Asian Night**  
(L418; 7949-38\*\*)

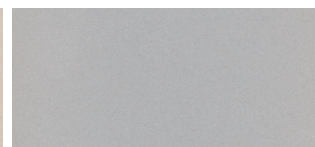


**Wheat Strand**  
(L430\*\*)

## Stratifié Perle



**Pearl Bisque**  
(L407; D485-07\*\*)



**Pearl Silver**  
(L408; D487-07\*\*)

## Acier Inoxydable Brossé



**Acier Inoxydable Brossé**  
(4SS; Grade 441)



**Acier Inoxydable Brossé** **P**  
(4SS; Grade 304)

**P** Fini Premium

\*Formica  
\*\*Wilson Art

KONE MonoSpace 300 n'est disponible que dans certains marchés.