

ELEVATOR WALL MATERIALS

FOR KONE MONOSPACE® 500, KONE MONOSPACE 500 FLEX, KONE MONOSPACE 700, KONE MINISPACE™

Metallic Laminate



Brushed Black Aluminum
(L401; M4254*) **P**



Plex Bronzetoned
(L402; M6486*) **P**



Oiled Bronze
(L403; 6200**) **P**



Alumasteel
(L404; 6277**) **P**



Satin Brushed Gold Aluminum
(L405; 6258**) **P**



**Satin Brushed Lite
Bronze Aluminum**
(L406; 6261**) **P**

Printed Laminate



Graphic Bamboo
(L210) **P**



Blue Pop Up
(L424) **P**



Orange Pop Up
(L425) **P**



Autumn High-rise
(L426) **P**

Pearlescent Laminate



Pearl Bisque
(L407; D485-07**) **P**



Pearl Silver
(L408; D487-07**) **P**

Wood Laminate



Natural Cane
(L409; 6930-NT*)



Smoky Walnut Woodline
(L410; 6926-NT*)



Macchiato Walnut
(L411; 6932-NT*)



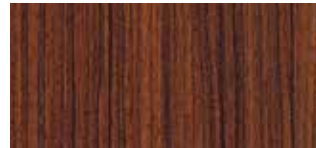
Ebony
(L412; 9012-NT*)



Asian Sand
(L413; 7952K-18**) **P**



Studio Teak
(L414; 7960K-18**) **P**



Rio
(L415; 7947K-18**) **P**



Madagascar
(L416; 7944K-01**) **P**



Amber Cherry
(L417; 7919-38**) **P**



Asian Night
(L418; 7949-38**) **P**



Kensington Maple
(L419; 10776-60**) **P**

P Premium finish

*Formica
**Wilson Art

3D Laminate



Neutral White
(L420; 918-SP*)

Earth
(L421; 5342-SP*)



Spectrum Red
(L422; 6902-SP*)

Black
(L423; 909-SP*)

Colored Glass¹



Siberian Glaze **P**
(GW1)

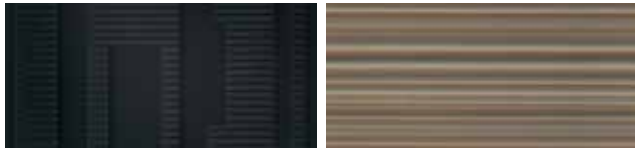
Frozen Orange **P**
(GW12)



Frozen Blue **P**
(GW13)

Frozen Lemon **P**
(GW14)

Patterned Glass¹



Night High-rise **P**
(G9)

Classic Bamboo **P**
(G11)



Mirror Blocks **P**
(G15)

White Ornament **P**
(G16)

Clear Glass¹

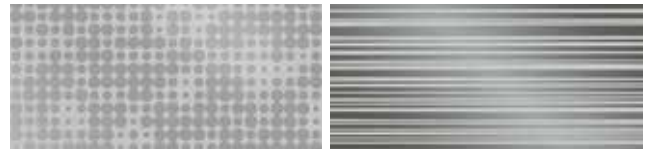


Transparent **P**
(TW1)

KONE
kone.us

This publication is for general informational purposes only. KONE Inc. reserves the right to alter the product design and specifications without prior notice. Minor differences between printed and actual colors may exist. Formica is a registered trademark of The Diller Corporation, a subsidiary of Formica Corporation. Wilsonart is a registered trademark of Wilsonart LLC. KONE MonoSpace® and KONE MiniSpace™ are trademarks or registered trademarks of KONE Corporation. Copyright © 2019 KONE Inc.

Etched Stainless Steel



Silver Cloud
(ST42S)

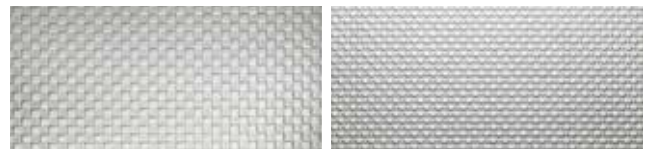
Silver Bamboo
(ST41S)



Golden Bamboo **P**
(ST41G)

Silver High-rise
(ST31S)

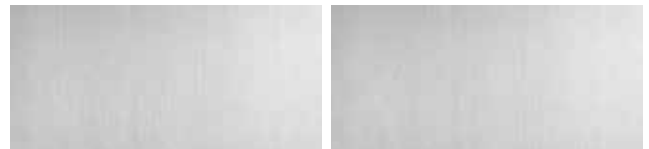
Textured Stainless Steel



Scottish Quad
(K)

Flemish Linen **P**
(TS2)

Brushed Stainless Steel



Brushed Stainless Steel
(4SS; Grade 441)

Brushed Stainless Steel **P**
(4SS; Grade 304)



Golden Brushed Stainless Steel **P**
(SS1)

P Premium finish

¹Glass materials available for rear wall only.