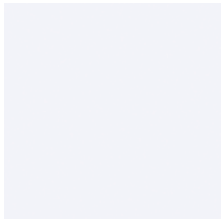


ELEVATOR WALL MATERIALS

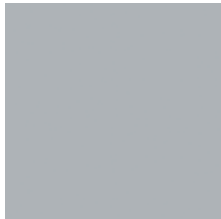


FOR KONE MONOSPACE® 500 DX, KONE MONOSPACE FLEX DX,
KONE MONOSPACE 700 DX AND KONE MINISPACE™ DX

TRACELESS LAMINATE†



Snow White Velvet (P)
(L431**)



Silver Velvet (P)
(L432**)



Black Velvet (P)
(L434**)



Ivory Velvet Elm (P)
(L435**)

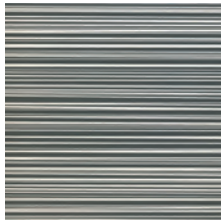


Charcoal Velvet (P)
(L433**)



Acorn Velvet Elm (P)
(L436**)

PRINTED LAMINATE



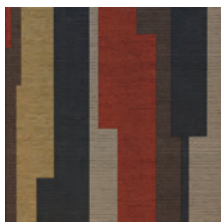
Graphic Bamboo (P)
(L210)



Blue Pop Up (P)
(L24)

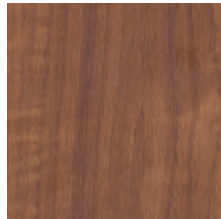


Orange Pop Up (P)
(L425)

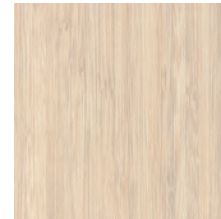


Autumn High-rise (P)
(L426)

WOOD LAMINATE



Macchiato Walnut
(L411; 6932-NT*)



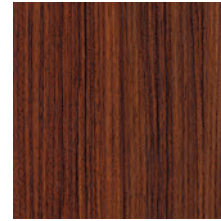
Asian Sand
(L413; 7952K-18**)



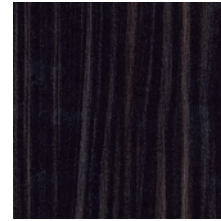
Kensington Maple
(L419; 10776-60**)



Studio Teak
(L414; 7960K-18**)



Rio
(L415; 7947K-18**)



Madagascar
(L416; 7944K-01**)



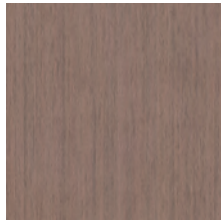
Amber Cherry
(L417; 7919-38**)



Asian Night
(L418; 7949-38**)



Ebony
(L412; 9012-NT*)



Smoky Walnut
Woodline
(L410; 6926-NT*)



Wheat Strand
(L430*)

PEARLESCENT LAMINATE



Pearl Bisque
(L407; D485-07**)



Pearl Silver
(L408; D487-07**)

(P) PREMIUM FINISH

*Formica

**Wilson Art

† = Unique fingerprint-resistant technology of Wilsonart® Traceless™ ensures smears, smudges, and streaks are seldom seen.

BRUSHED STAINLESS STEEL



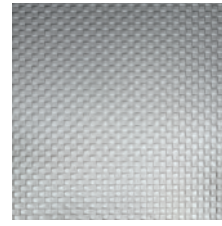
Brushed Stainless Steel (P)
(4SS; Grade 441)



Brushed Stainless Steel (P)
(4SS; Grade 304)



Golden Brushed
Stainless Steel (P)
(SS1)



Scottish Quad² (P)
(K)



Flemish Linen (P)
(TS2)

COLORED GLASS¹



Siberian Glaze (P)
(GW1)



Frozen Orange (P)
(GW12)



Frozen Blue (P)
(GW13)



Frozen Lemon (P)
(GW14)



Transparent (P)
(TW1)

PATTERNED GLASS¹



Night High-rise (P)
(G9)



Classic Bamboo (P)
(G11)



Mirror Blocks (P)
(G15)



White Ornament (P)
(G16)

3D LAMINATE



Neutral White (P)
(L420; 918-SP*)



Earth (P)
(L421; 5342-SP*)

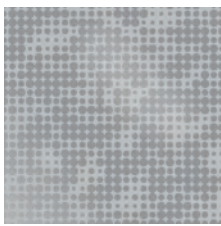


Spectrum Red (P)
(L422; 845-SP*)



Black (P)
(L423; 909-SP*)

ETCHED STAINLESS STEEL



Silver Cloud (P)
(ST42S)



Silver Bamboo (P)
(ST41S)



Golden Bamboo (P)
(ST41G)



Silver High-rise (P)
(ST31S)

KONE
kone.us

Copyright © 2022 KONE Inc. This publication is for general informational purposes only. KONE Inc. reserves the right to alter the product design and specifications without prior notice. Minor differences between printed and actual colors may exist. Formica is a registered trademark of The Diller Corporation, a subsidiary of Formica Corporation. Wilsonart is a registered trademark of Wilsonart LLC. KONE MonoSpace 500 DX and KONE MiniSpace DX are trademarks or registered trademarks of KONE Corporation.

TEXTURED STAINLESS STEEL

(P) PREMIUM FINISH

¹Glass materials available for rear wall only. Our glass materials are not available for KONE MonoSpace Flex DX.

²Scottish Quad cannot be mixed with other finishes or laminate colors.

GET CONNECTED

Scan this QR code or visit website to get in touch with a KONE Sales Professional:

kone.us/dxwall

