

# KONE TRANSITMASTER™ 220

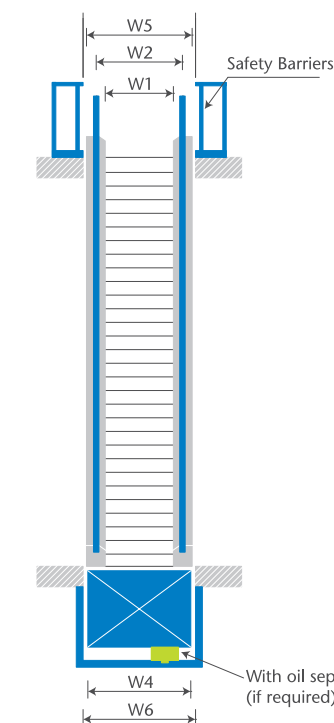
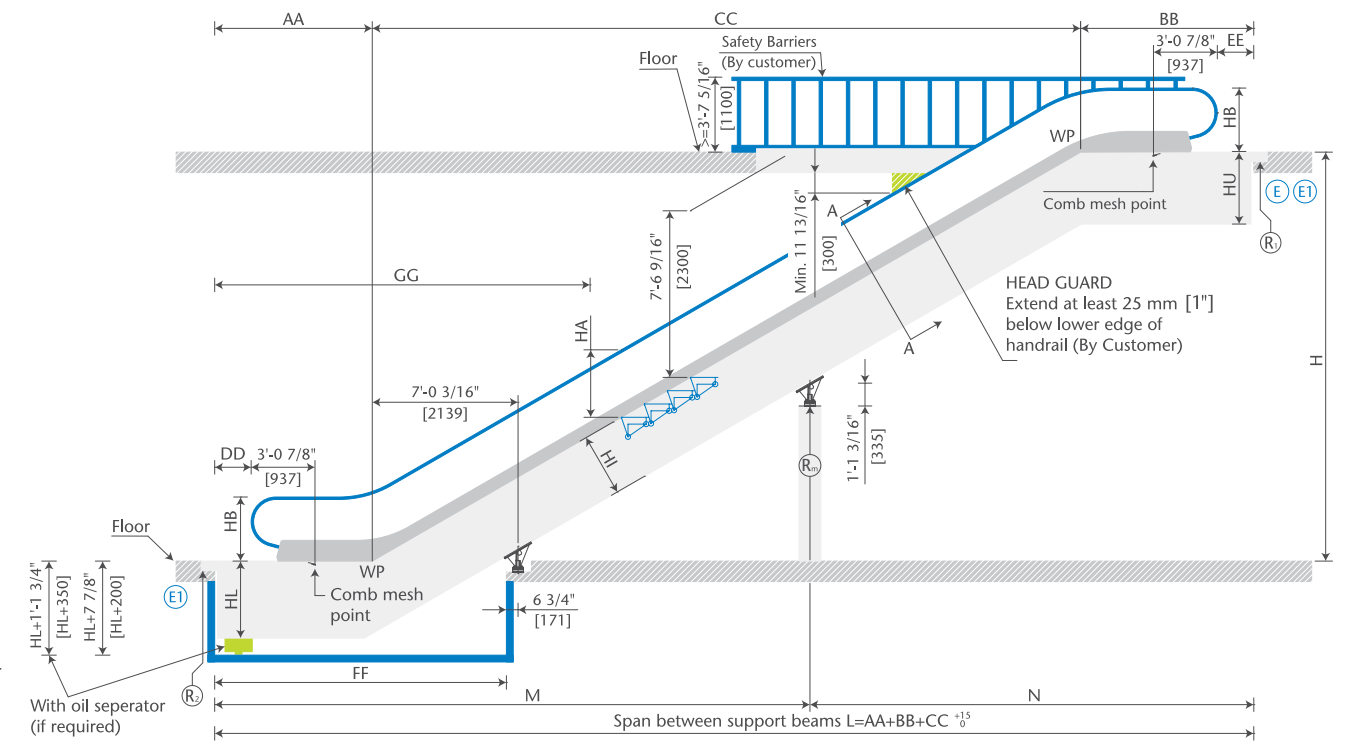
## Configuration & Dimensions - Public Transportation Escalator Product

KONE TRANSITMASTER 210 BASIC DATA											
Inclination	Level Steps	Radii	Maximum Vertical Rise	Nominal Step Width	Balustrade	Balustrade height	Speed	Electrification	Chain Type	Handrail	Environment
30 degrees	2 or 3 Level Steps	Lower Radius: 1.5/1.0 (meters) Upper Radius: 2.7/2.0 (meters)	49' 2" (15 m)	24", 32" and 40" (600,800, 1000 mm)	Glass and solid incline	3'-3" 3/8" (1000 mm)	100 FPM (0.5 m/s)	NFPA 70 and CSA-C22.1	Inside Chain Roller	V-Type	Indoor/Outdoor

DIMENSION BB/EE (UPPER HEAD) FOR NON-SEISMIC						
W1: Step Width	H: Rise	BB				EE
		Level steps - up radius / low radius (m)				
		2-1.0/1.0	2-1.5/1.0	3-1.5/1.0	3-2.7/2.0	
40" (1000 mm)	8' 2 7/8" - 11' 9 3/4" (2500 mm - 3600 mm)	8' 3/8" (2455 mm)	8' 5 1/8" (2589 mm)	9' 8 3/8" (2949 mm)	10' 4 1/8" (3173 mm)	1' 9 1/8" (535 mm)
	11' 9 3/4" - 23' 11 1/2" (3601 mm - 7300 mm)	8' 3 3/8" (2525 mm)	8' 8 1/8" (2659 mm)	9' 10 3/8" (3019 mm)	10' 7 1/8" (3243 mm)	1' 11 1/8" (605 mm)
	23' 11 1/2" - 52' 5 1/8" (7301 mm - 16000 mm)	9' 8 3/8" (2955 mm)	10' 1 1/8" (3089 mm)	11' 3 1/8" (3449 mm)	12' 3/8" (3673 mm)	3' 4 3/8" (1035 mm)
32" (800 mm)	8' 2 7/8" - 27' 10 3/8" (2500 mm - 8500 mm)	8' 7 3/8" (2625 mm)	9' 3/8" (2759 mm)	10' 2 1/8" (3119 mm)	10' 11 3/8" (3343 mm)	2' 3 3/8" (705 mm)
24" (600 mm)	8' 2 7/8" - 34' 5 1/8" (2500 mm - 10500 mm)	9' 8 3/8" (2955 mm)	10' 1 1/8" (3089 mm)	11' 3 1/8" (3449 mm)	12' 3/8" (3673 mm)	3' 4 3/8" (1035 mm)

DIMENSION AA/DD (LOWER HEAD) FOR NON-SEISMIC						
W1: Step Width	Truss/comb heating	AA				DD
		Level steps - up radius / low radius (m)				
		2-1.0/1.0	2-1.5/1.0	3-1.5/1.0	3-2.7/2.0	
40" (1000 mm)	Without/With	7' 3 3/8" (2226 mm)	7' 3 3/8" (2226 mm)	8' 3 3/8" (2534 mm)	9' 1 3/8" (2777 mm)	1' 9 1/8" (535 mm)
32"/24" (800 mm / 600 mm)	Without	7' 3 3/8" (2226 mm)	7' 3 3/8" (2226 mm)	8' 3 3/8" (2534 mm)	9' 1 3/8" (2777 mm)	1' 9 1/8" (535 mm)
32"/24" (800 mm / 600 mm)	With	8' 5 3/8" (2576 mm)	8' 5 3/8" (2576 mm)	9' 5 3/8" (2884 mm)	10' 3 3/8" (3127 mm)	2' 10 1/8" (885 mm)

HA	HB	CC	FF	HL	HU
3' 3" (990 mm)	3' 1" (940 mm)	1.73205 x H	AA+7' 1/2" (AA+2139 mm)	3' 8 1/2" (1130 mm)	3' 8 1/2" (1130 mm)



KEY WIDTH DIMENSIONS			
W1: Step width	3'-3 1/2" (1000 mm)	2' - 7 1/2" (800 mm)	1'-11 1/2" (600 mm)
W2: Handrail centerline distance	4'-1 11/16" (1262 mm)	3'-5 3/8" (1064 mm)	2'-10 1/8" (866 mm)
W4: Width of truss	4'-11 1/16" (1510 mm)	4' - 3 3/8" (1312 mm)	3' - 7 1/2" (1114 mm)
W5: Width of finished escalator	5'- 3 1/8" (1602 mm)	4' - 7 1/4" (1404 mm)	3'-11 1/2" (1206 mm)
W6: Width of pit	5'- 5 1/8" (1650 mm)	4' - 9 1/8" (1450 mm)	4' - 1 3/8" (1250 mm)

EXTENSION BY SEISMIC TYPE	
Seismic end support type	Increase for AA&BB&DD&EE
Type A	0' 1 3/8" (45 mm)
Type B	0' 1 3/8" (45 mm)
Type C	0' 3 1/8" (79 mm)
Type D	0' 4 1/8" (103 mm)
Type E	0' 5 3/8" (146 mm)
Type F	0' 8 3/8" (205 mm)
Type G	0' 10 3/8" (262 mm)
Type H	1' 3/8" (313 mm)

### Notes

(1) Details represent standard KONE escalator configurations. Please consult your sales professional to review all possible deviations.

Visit [KONE.us](http://KONE.us) for the latest project-specific details, electrical data, reaction loads, planner tools and building access requirements.

\*All drawings are for illustration purposes only.